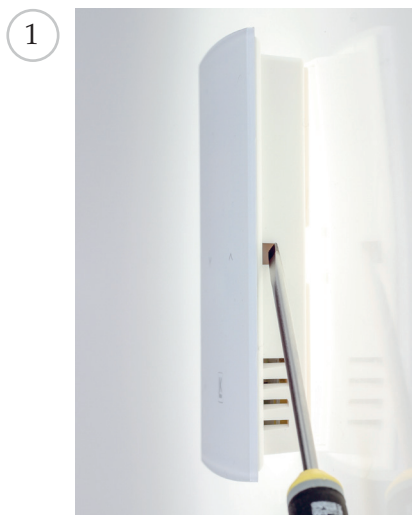


Dismount and Re-Mount LK Room Thermostat S2

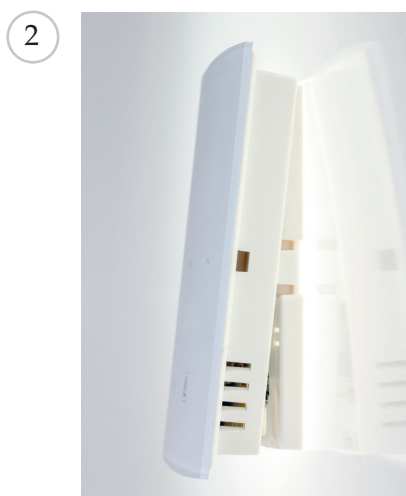
This assembly instruction shows how to correctly dismount and re-mount LK Room Thermostat S2.



1 With the help of a screwdriver, unsnap the clips on either side of the thermostat.



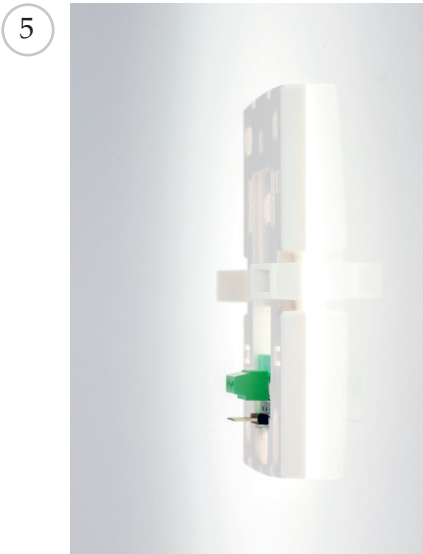
3 Bring the lower part of the thermostat outwards from the wall.



2 The front of the thermostat disconnects from the wall mount.



4 Bring the thermostat straight upwards along the wall.



The thermostat is separated from the wall mount. The wiring and connectors are intact. This means that the wall mount doesn't need to be replaced.



Push the lower part of the thermostat towards the wall mount. Take care not to damage the connection pins on the wall mount when re-mounting the thermostat.



To mount the thermostat to the wall mount again, slide the thermostat downwards into the wall mount.



The thermostat clicks into the wall mount which completes the mounting. The thermostat display will light up once connected the the LK Connection Box.